



# Toms River Bureau of Fire Prevention

33 Washington Street  
P.O. Box 728  
Toms River, New Jersey 08753  
(732) 240-5153  
www.trfireprevention.com



## Residential Resale Requirements

If you are selling your home in Toms River, you are required to schedule an appointment with the Toms River Bureau of Fire Prevention for a resale inspection. Appointments will be scheduled upon completion of an application found on our website ([www.trfireprevention.com](http://www.trfireprevention.com)). It is a violation of the Uniform Fire Code (N.J.A.C. – 5:70-2.3) & a \$500 fine to close without a Certificate of Smoke & Carbon Monoxide Alarm Compliance.

### Inspection Fees:

- Initial Inspection: \$75.00
- 1<sup>st</sup> Re-Inspection: No Charge
- Additional Re-Inspections: \$35 per re-inspection
- Appointment No Show: \$75 in addition to inspection fee
- Duplicate copy of Certificate: \$30

Due to high scheduling demand, applications should be submitted at least 3 weeks in advance of closing date. **CERTIFICATE EXPIRES 6 MONTHS FROM THE DATE OF ISSUANCE.** Certificates must be obtained every time there is a transfer of title.

### Fire Extinguisher (NJAC 5:70-4.19):

- **MINIMUM SIZE OF 2A-10B:C – NOT TO EXCEED 10 POUNDS.**
- Recently purchased receipt or inspection tag from within past 12 months required.
- Mounted with manufacturer's bracket within 10 feet of kitchen area & no higher than 5 feet.
- Located in a path of egress & unobstructed from view.

### Smoke Alarms:

Working smoke alarms are required to be on every level of the residence including basements. Depending on the year the home was built, different requirements may apply. If you have done any renovations or additions to your home, code requirements at the time of renovation requiring any upgrades will apply.

**Prior to 1983:** minimum of one (1) battery-operated smoke alarms (10-year sealed battery) on each level of the home including basements.

**1984 – 1990:** Hard-wired & Interconnected smoke alarms with battery back-up on each level of the residence including basements

**1991 – Present:** Hard-wired & Interconnected smoke alarms with battery back-up installed:

- In each sleeping room
- In hallways within 10 feet of each sleeping room door
- On each level of the residence including basements

### Carbon Monoxide Alarms:

Carbon Monoxide Alarms are required outside of all sleeping rooms (within 10 feet of sleeping room doors). More than one Carbon Monoxide Alarm may be required. Standalone plug-in, battery or combination Smoke/CO detectors are acceptable.



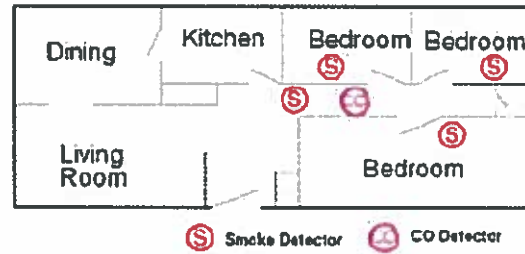
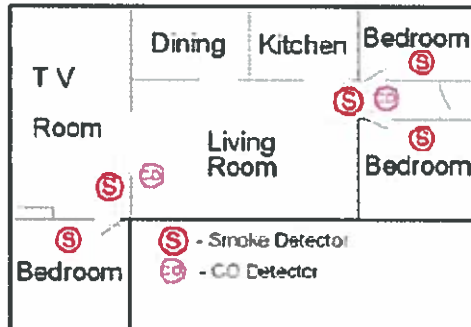
# Toms River Bureau of Fire Prevention

33 Washington Street  
P.O. Box 728  
Toms River, New Jersey 08753  
(732) 240-5153  
www.trfireprevention.com

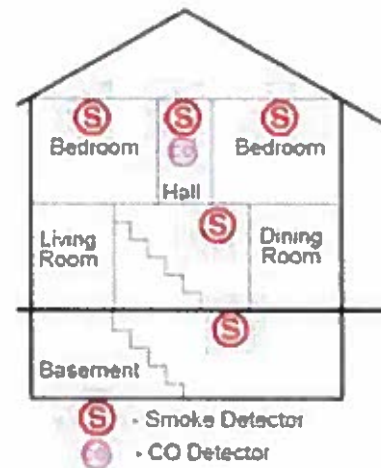
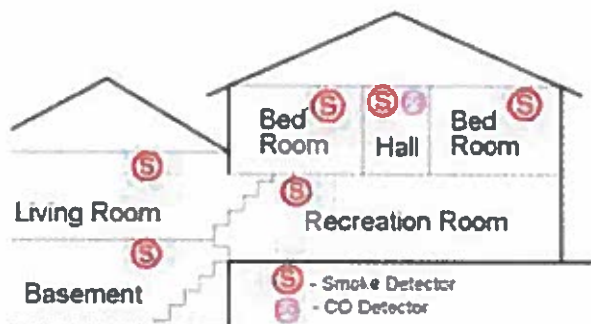


## Smoke and CO Alarm Location Examples

### Single Story Homes:



### Multi-Story Homes:



### Mounting of Detectors on Walls/Ceiling:

